

SignAge

News from Rydon Signs



Issue 2 Autumn 2021

WELCOME

Welcome to SignAge, issue 2.

It does seem that some sort of normality is beginning to appear in the economy if the number of enquiries we are receiving is any indication.

There has been a noticeable increase in activity and we are currently negotiating continuing work for one of our railway customers, with whom we have worked for many years. We are also discussing, with a council, a package of notice boards to be sited throughout a city centre area.

Then there is a complete signage system for two shopping centres which will involve notice boards, finger posts and printed fabricated signs and hence will use many of our manufacturing capabilities.

I do hope you find this issue of SignAge interesting and if we can offer any help or advice about new or replacement signage or poster cases please get in touch.

Dave Rossetter,

GENERAL MANAGER

SOLAR DISPLAY SYSTEMS



With the clocks going back and the nights drawing in you may be interested in a system that could present information in virtually any location, with 24-hour visibility and zero running costs.

Using the latest in solar cell technology, our Eco-Vision products have been designed to provide an eco-friendly and long-term, cost-effective solution, to provide off-grid illumination within noticeboards, poster cases, wayfinding displays and corporate signage.

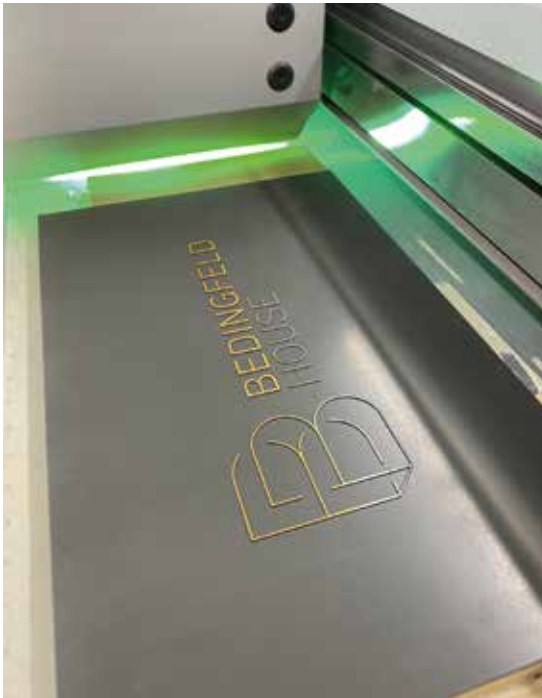
Eco-Vision's solar panel draws in UV energy during standard daylight conditions, delivering it to the internal battery units for storage and once dusk arrives the illumination is triggered upon detection of a person within a 3m radius.

There is even the option of incorporating a sound module to make your messages accessible for the visually impaired.

Eco-Vision is available in a range of sizes for wall or post mounting.



DTS – DIRECT TO SUBSTRATE - PRINTER



Although we have had this system for some time but recent times have seen a dramatic increase in its use.

The printer has a large flat bed and will print directly onto a range of substrates such as aluminium giving a really sharp finish that is then protected with a lacquer spray to provide a seal.

In addition, it gives us the ability to highlight details within the print by building up the ink to a 1mm depth in order to give a three-dimensional effect. The gold lines on the panel in the photograph, for instance, stand 1mm proud of the background print.

If you have a need for signs that are just that bit different, why not get in touch and we'll come up with some ideas.

ARCHITECTURAL SIGNS



Architectural signs have been the main instigator in the increased use of our DTS printer.

We have recently completed a few projects involving internal wayfinding signs for multi-occupancy buildings.

As you can see on the photograph, making the letters stand proud of the background really enhances the effectiveness of the signs.

NAILSEA & BACKWELL STATION



Our latest project for GWR has just been completed when we installed signage for the whole of Nailsea & Backwell station.

The project included a gantry, running in signs, information signs, directions signs and poster cases fitted in various locations.

YOUR TOTAL SIGN SERVICE



DESIGN – MANUFACTURE – INSTALL – MAINTAIN



01392 466653 rydonsigns.com
sales@rydonsigns.com

Rydon Signs Limited, Unit 2 Peek House, Pinhoe Trading Estate, Exeter, Devon EX4 8JR

